

# Integra LifeSciences strengthens data management to complement business growth

Integra LifeSciences is an integrated pharmaceutical company, committed to providing affordable and innovative medicines for healthier lives. Founded in 1989, Integra is headquartered in Plainsboro, New Jersey and has over 3,300 employees worldwide.

A man in a dark suit and tie is drawing a white line graph on a red background. The line graph shows an overall upward trend with some fluctuations. The man is holding a white marker. The background is a blurred office setting with other people.

ESTUATE

# 1. Business Challenge

**Integra LifeSciences was looking for a comprehensive solution to tackle all their data management woes. They needed to:**



Rationalize their application portfolio and retire redundant applications



Ensure continued access to historical data for reporting, customer inquiries, audits and e-discovery requests



Implement data archival policies in compliance with regulatory requirements

## 2. Estate Solution

Estate offered solutions to successfully archive and manage Integra's vital enterprise data.

- **Retired Finance and Manufacturing instances** of ROSS ERP system and disposed off inactive applications
- **Archived 45 GB of data** for Finance and Manufacturing modules leading to an organized data storage within the enterprise
- **Provided complete access to archived data** via Cognos to generate audit reports to respond to internal queries

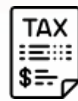
# 3. Business Impact

With Estuate's customized solutions, Integra LifeSciences restored strength in their business data. The benefits included:



## Improved application performance

by controlling ongoing database and data warehouse growth



## Rapid response to audit

and discovery requests with universal, referentially intact access to archived information



## Maximum cost effectiveness

with reduced hardware, storage and maintenance costs by archiving data



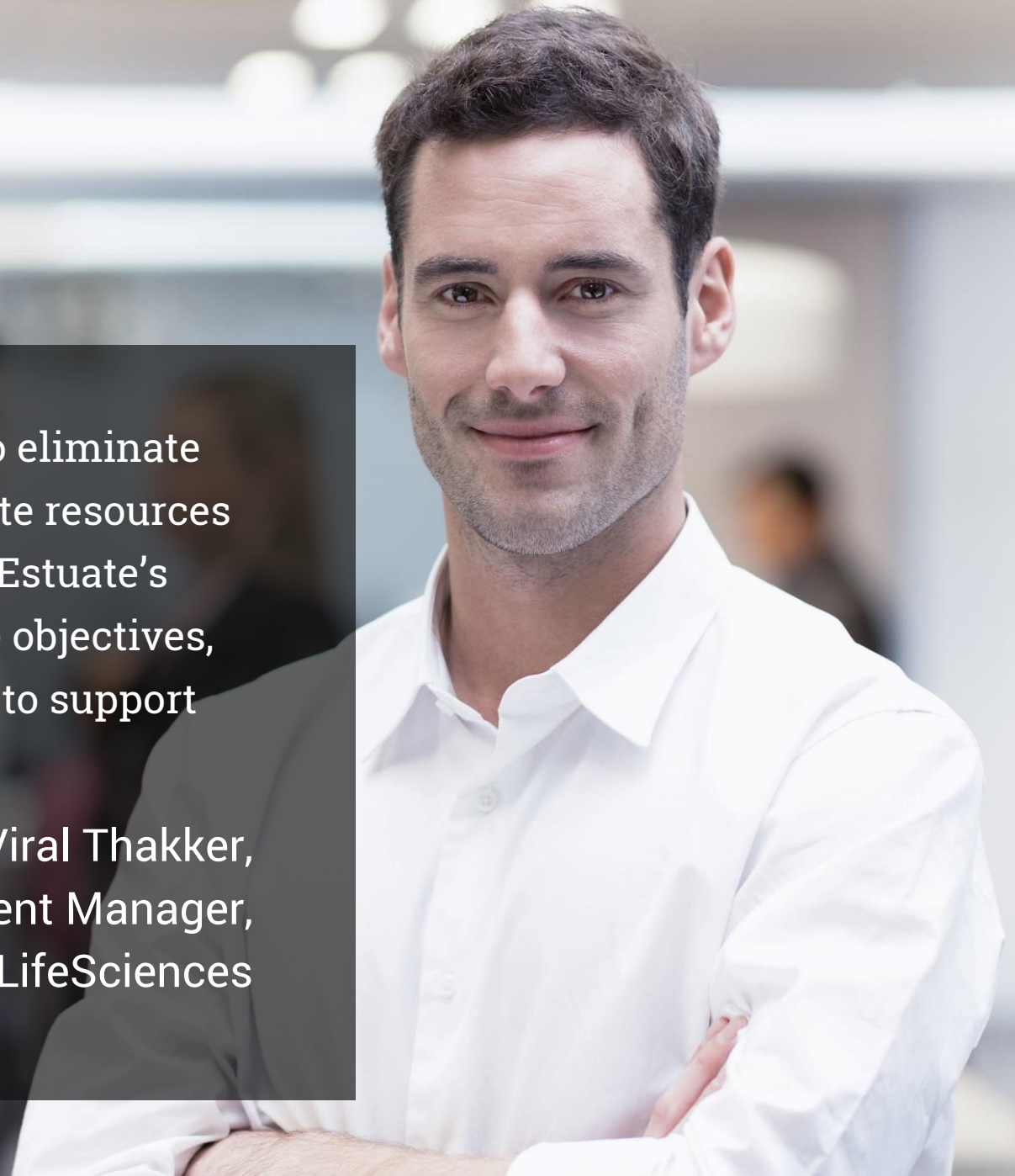
## Total compliance

with data retention and archival regulations as per industry guidelines

# Testimonial

// We at Integra LifeSciences needed to eliminate outdated applications and consolidate resources to improve efficiency in operations. Estuate's solution not only helped us hit these objectives, but has laid an excellent foundation to support our growing business demands.

- Viral Thakker,  
Global Applications Development Manager,  
Integra LifeSciences



# About Estuate

Estuate is a global Product Engineering and IT Enterprise Services company headquartered in Milpitas, CA, and with offices in New Jersey, Canada, India and the UK. The company specializes in leading edge technology solutions in IOT, AI and Digital Transformation solutions. The focus areas and practices that leverage these technologies are Product Engineering Services, Data & Analytics, Subscription Billing & Revenue Management and Governance, Risk & Compliance.



[www.estuate.com](http://www.estuate.com)

## Talk to our experts



+1 408-946-0002



[contactus@estuate.com](mailto:contactus@estuate.com)

Follow us on social media:

